



Required/Optional Items:

- Mounting hardware
- 3 type "C" alkaline batteries

Compatibility:

- MG/SP series v4.0 or higher (except SP4000)
- MG6130/MG6160 v3.0 or higher
- RTX3 v1.5 or higher
- K32LCD v1.3 or higher
- K32LX v1.0 or higher
- WinLoad v4.7 (with InField Upgrade Software v2.3) or higher
- For latest updates visit paradox.com

Description

The SR120 is a stand-alone, fully supervised wireless siren with built-in strobe light and wireless transceiver.

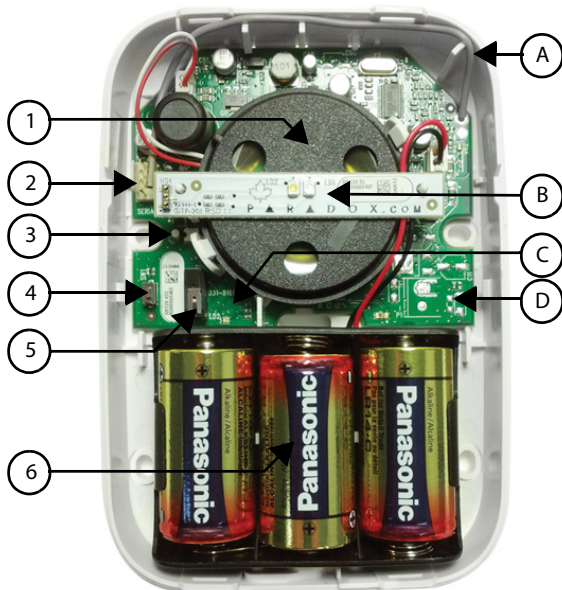
The SR120 operates using three size "C" alkaline batteries. With normal use, the SR120 will function up to three years without the need to replace the batteries.

The SR120 uses 2-way wireless communication, which provides continuous supervision between the panel and siren with fast response to alarm signals within 4 seconds.

Features

- Built-in transceiver (433MHz or 868 MHz)
- Siren that reaches 100dB or more (see 1 below)
- Integrated strobe light (see B below)
- Fast alarm response time (within 4 seconds)
- 2.5 hour alarm display (strobe flashes every 4 seconds after bell cut-off)
- Siren presence supervised by control panel
- Wall tamper protection against removal of unit from wall (see 3 below)
- Battery cover tamper protection against cover removal (see 5 below)
- Assign a total of 4 sirens per control panel (including SR150)
- Firmware upgradable via 307USB (see 2 below)
- Siren test mode

Overview



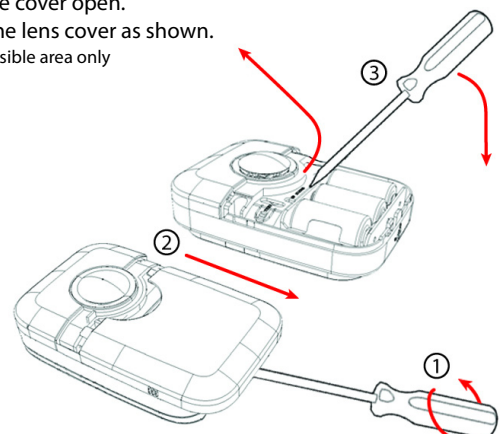
- 1) Siren (100dB or more)
- 2) Infield firmware upgrade connector
- 3) Wall tamper switch (detects when unit is removed from wall)
- 4) Test switch
- 5) Cover tamper switch (detects when battery cover is removed)
- 6) Battery pack (3 size "C" alkaline batteries)

- A) Antenna
- B) Strobe lights (red and white)
- C) Signal strength/RF transmission LED. Refer to *LED Feedback* on reverse for more information.
- D) Status LED

To open the lens cover*:

- 1) Unlock the battery cover with a screwdriver.
- 2) Slide the cover open.
- 3) Open the lens cover as shown.

*Service accessible area only



LED Feedback

Signal strength/ RF transmission LED	Red blink - sending data Green blink - receiving data Amber flash 4x - strong signal Amber flash 3x - good signal Amber flash 2x - weak signal Amber flash 1x - very weak signal (relocate) No flash - no signal
Status LED	Red steady on - powered/normal operation Red slow blink - low battery

Specifications

Power	4.5Vdc (3 size "C" alkaline batteries)
Battery life	Up to 3 years based on normal use (e.g., 2 alarms per year with strobe for 2.5 hours and 8 squawks per day at an average of 25°C (77°F) with default alarm time set to 4 minutes. If the alarm is set for more than 4 minutes, the battery life may be reduced).
RF frequency	433MHz or 868MHz
Siren	100dB or more (1 meter)
Dimensions	15.2cm X 4.6cm X 10.9cm (6in X 1.8in X 4.3in)
Weight	24g (.85oz) without batteries
Humidity range	5% to 90%
Operating Temperature	-20°C to 50°C (-4°F to 122°F)
RF range	70m (230ft)

Programming

MG/SP	Feature	Details
[683]	Learn Siren #1	Press and hold "TEST" switch for 2 seconds after entering the section to learn the siren. WARNING: When you press the "TEST" switch, the SR120 will squawk and the strobe light will flash five times to confirm registration to the panel.
[684]	Learn Siren #2	
[685]	Learn Siren #3	
[686]	Learn Siren #4	
[687]	Display Signal Strength Siren #1	Press and hold "Test" switch for 3 seconds after entering the section to display the signal strength the panel is receiving from the siren (on a K32LCD v1.3 or higher, or a K32LX v1.0 or higher).
[688]	Display Signal Strength Siren #2	
[689]	Display Signal Strength Siren #3	
[690]	Display Signal Strength Siren #4	
[691]	Label Siren #1	These labels are used when reporting events via e-mail through the IP100 and for troubleshooting purposes. Maximum 16 characters.
[692]	Label Siren #2	
[693]	Label Siren #3	
[694]	Label Siren #4	
[695]	Temporary Tamper Switch Deactivation for Maintenance	Press the [ENTER] key after entering the section to deactivate tamper alarm until the cover is replaced or after 30 minutes.
[587]	Panel Supervision of Siren	OFF = disabled ON = enabled (default)
Option [3]	Siren #1 (OFF/ON)	The control panel supervises the presence of the SR120. If lost, the control panel will follow global supervision loss option set in the panel.
Option [4]	Siren #2 (OFF/ON)	
Option [5]	Siren #3 (OFF/ON)	
Option [6]	Siren #4 (OFF/ON)	

Upgrading the Firmware

The SR120 firmware can be upgraded through InField (V3.0 or higher) using the 307USB Direct Connect Interface. Refer to the firmware upgrade instructions found at: paradox.com - Software - WinLoad - Firmware Upgrade Instructions.

NOTE: Ensure that the SR120 Wireless Siren is awake before beginning the firmware upgrade. To wake up the siren, press the "test" button. The siren will provide you with a 60 second delay in order to begin the update.

Tamper Supervision

If a tamper is detected, the SR120 will sound an alarm and the strobe light will flash for 4 minutes. The control panel will follow the global supervision options set in the panel.

For complete warranty information, please visit www.paradox.com/terms. Your use of the Paradox product signifies your acceptance of all warranty terms and conditions. Magellan, Spectra SP, EVO, and WinLoad are trademarks or registered trademarks of Paradox Ltd. or its affiliates in Canada, the United States and/or other countries. For the latest product approvals, such as UL and CE, please visit www.paradox.com. © 2012 Paradox Ltd. All rights reserved. Specifications may change without prior notice. One or more of the following US patents may apply: 7046142, 6215399, 6111256, 6104319, 5920259, 5886632, 5721542, 5287111, and RE39406 and other pending patents may apply. Canadian and international patents may also apply. Changes or modifications not expressly approved by the party responsible for compliance could void the user's authority to operate the equipment.